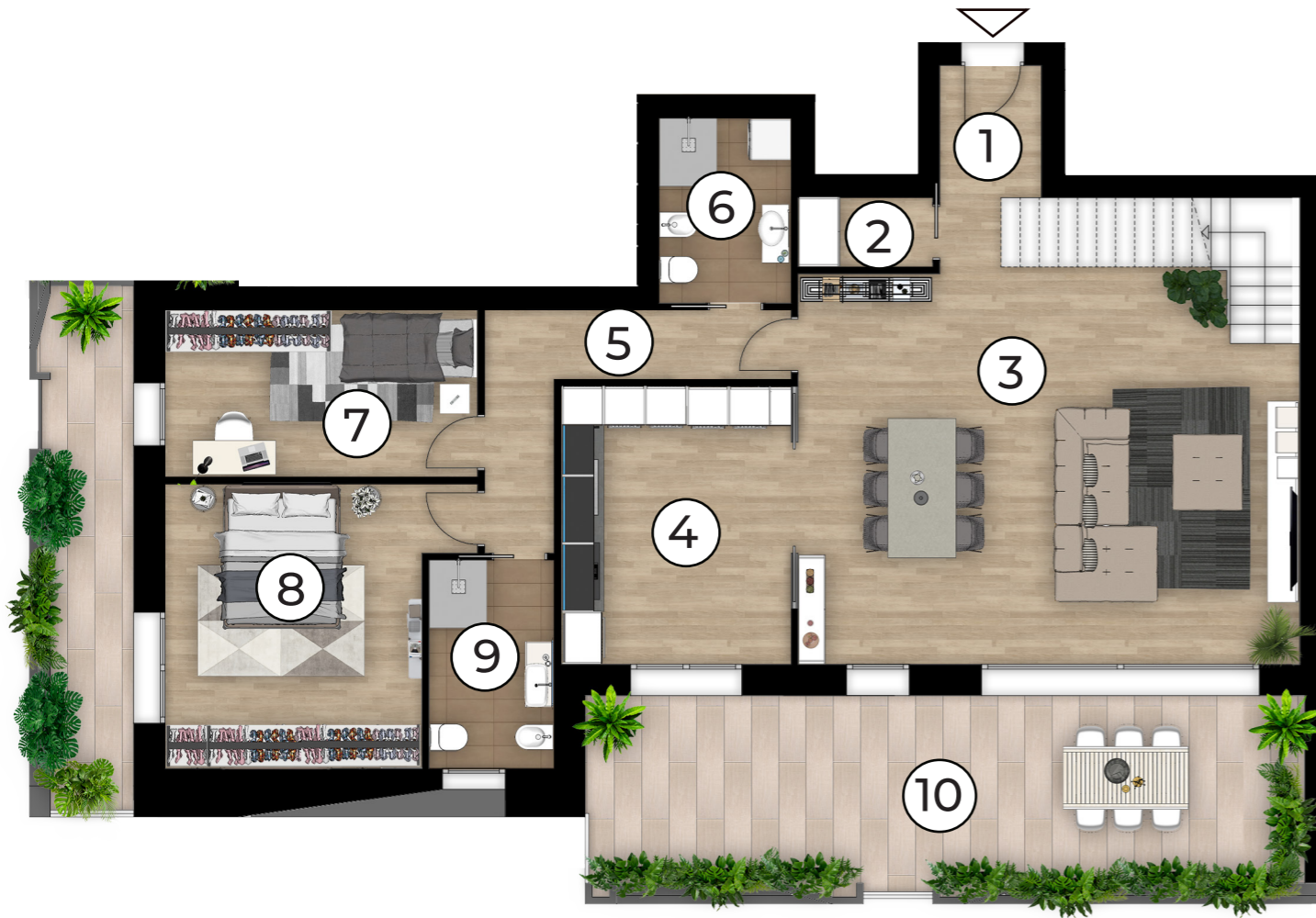


# Residenze Via J. Cavacio - Padova

Pianta Piano Secondo e Sottotetto



<b>Appartamento 10</b>	<b>238,63 m<sup>2</sup></b>		
1 Ingresso	2,77 m <sup>2</sup>	8 Camera	15,97 m <sup>2</sup>
2 Ripostiglio	1,94 m <sup>2</sup>	9 Bagno	5,40 m <sup>2</sup>
3 Soggiorno	41,97 m <sup>2</sup>	10 Loggia	28,36 m <sup>2</sup>
4 Cucina	13,74 m <sup>2</sup>	11 Disimpegno	3,20 m <sup>2</sup>
5 Disimpegno	8,95 m <sup>2</sup>	12 Ripostiglio	28,88 m <sup>2</sup>
6 Bagno	5,05 m <sup>2</sup>	13 Ripostiglio	16,80 m <sup>2</sup>
7 Camera	10,80 m <sup>2</sup>	14 Bagno	6,30 m <sup>2</sup>
		15 Terrazza	78,90 m <sup>2</sup>

